

R-F-M

THE MIDLANDS MART

— RUGBYFARMERSMART.COM —

The Charolais Pavilion, Avenue M, Stoneleigh Park,
Kenilworth, Warwickshire CV8 2RG
02476 697731 | www.rugbyfarmersmart.com | 43/139/8013
Office hours: Monday to Friday - 9.00am - 5.00pm
Opening Time: Gates open at 5.30am until further notice

MARKET REPORTS FOR MONDAY 20TH MARCH 2023

MARKET AT A GLANCE

Prime Steers to 337p/kg & £2194

Prime Heifers to 335p/kg & £2191

Prime Bulls to 330p/kg & £2468

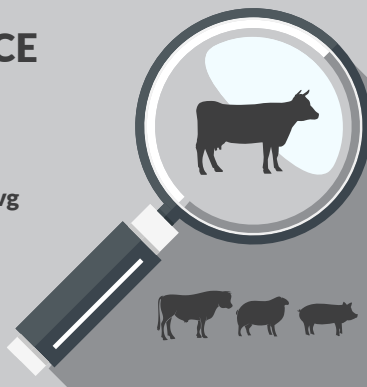
Cows to 241p/kg & £1905

Prime Hogg SQQ 274p/kg (1998 Avg
£115.50)

Prime Hogs to 404p/kg & £140

Ewes to £209 (1596 Avg £109.50)

Calves to £385 (75)



THURSDAY 23RD MARCH SALE OF STORE CATTLE & WEANLINGS

Catalogues & Entry Forms available by post, email or on the website
www.rugbyfarmersmart.com | admin@rugbyfarmersmart.com

CATTLE: 73 FORWARD

Rugby Farmers Mart
Monday 20th March 2023

A much smaller entry of Cattle forward selling again to a Beef trade that shows no signs of looking back. More numbers are required to satisfy the weekly demand from Wholesalers.

Numbers forward

28 steers to average 291.18ppk

36 Heifers to average 294.73ppk

9 Young Bulls

15 OTM Cattle

A tidy show of bullocks with not as much weight around as last week. Andrew Bishop topping the day at 337ppk. R Taylor topping the per head at £2194.

In the Heifers it was Horace Witcomb with his heifers selling to 335ppk. And again Andrew Bishop up in top ranks with his heifer at £2191.20.

Topping again in the bulls at 330ppk Mr Bishop or £2468.40.

Ohhh and again Andrew tops the Cull Cows at 241ppk. L Smith tops at £1905.

More cattle are required weekly to fulfil demand.

Auctioneer: Emma Coupland (07808 271218)

Len Eadon 1999-2022 Tribute page

<https://leneadon.muchloved.com/?fbclid=IwAR1QM9qsvxqscmyehDUwuJvjrbR4KICiDqyezwbDyBEAsDaB164bZn50g4>

****FAT CATTLE TIMINGS****
COWS 8:30AM
PRIME CATTLE 9AM

Strip till Planting with Claydon. Cereals, Beans, and Cover Crops, based in Barford R.L. Ltd ring 07885298326

FOR SALE

Alfa Laval & Gascoigne parlour Parts, Jars, Cake augers and parlour washers
07955179854

STEERS & BULLS

Top prices per Head				FA
British Blue (Bull)	748kg	£2468	A Bishop	Y
British Blue	892kg	£2194	R Taylor	Y
Limousin x	682kg	£2114	AH Chantrell & Sons	Y
Limousin	636kg	£2073	A H Chantrell & Sons	Y
Limousin	634kg	£2047	A H Chantrell & Sons	Y

Top prices per Kilo				
Limousin x	574kg	337ppk	A Bishop	Y
Limousin	602kg	336ppk	A H Chantrell & Sons	Y
Limousin	608kg	328ppk	A H Chantrell & Sons	
Blonde	636kg	326ppk	A H Chantrell & Sons	Y
Limousin	634kg	323ppk	A H Chantrell & Sons	Y

HEIFERS

Top prices per head				FA
Limousin x	664kg	£2191	A Bishop	Y
Limousin x	618kg	£2070	H & B A Witcomb	Y
Limousin	640kg	£2028	RW & HER Trivett	Y
Limousin	650kg	£2015	Ralph J Tustian	Y
Limousin	642kg	£1983	N A S Johnson	Y
Top prices per kilo				
Limousin x	618kg	335ppk	H & B A Witcomb	Y
Limousin x	664kg	330ppk	A Bishop	Y
Limousin x	574kg	328ppk	H & B A Witcomb	Y
Limousin	554kg	325ppk	H & B A Witcomb	Y
Limousin	560kg	323ppk	H & B A Witcomb	Y

Funeral Announcements

It is with great sadness we report the passing of Nick Foster a loyal supporter of RFM
His funeral will take place on Monday 27th March at 2pm at Ilmington Church, Shipston-on-Stour

We are deeply saddened to report the passing of Mr Robin Tombs. His funeral will be held on Thursday 23rd March 11am at St Mary's Church, Long Crendon, Aylesbury. Robin was a loyal supporter of RFM. The lambs produced by himself and Sarah have always created a great following.

Gordon Johnson passed away peacefully on 6th March at Northampton General Hospital
His funeral will take place on Wednesday 29th March, 2pm at Rainsbrook Crematorium

COWS

Top prices per head Cows					FA
Char	882kg	£1905	L Smith Farming		N
Limousin	900kg	£1863	Heart of England Farms		Y
Limousin	840kg	£1797	Heart of England Farms		Y
Limousin x	792kg	£1710	H Smith & Sons		Y
Top prices per kilo					
Limousin	650kg	241ppk	A Bishop		N
Limousin	696kg	230ppk	Heart of England Farms		Y
Limousin	746kg	225ppk	Heart of England Farms		Y



SHEEP:3803 FORWARD PRIME HOGGS:1997 FORWARD SQQ 274p/KG AVG £115.50

Spring has sprung for the Hogg men with just under 2000 Hoggs on parade to meet a massive lift in trade as Exports open to help fill the Family Fridges for better eating habits through the month of Ramadan. An SQQ of 274p/kg just phenomenal on a yarding of Hoggs that lacked all the quality of the week before. Massive demand for best end Hoggs today but sadly not on display. Export weights really the flavour of the month with most trading over 280p/kg. A deadweight equivalent so high as it would be embarrassing to put to paper the figures, you can do the maths yourself and an all in avg of £115.50!! Goats a real barnstorm seeing 404p/kg from Brian Wilson, Essex also at 392, 375 and 367p/kg. Hoggs topped out today by A T Edwards, Derbyshire seeing 35kg to 329p/kg with Hillside 325p/kg and Hallifield Farmers 316p/kg equal with D Gurney. City Hoggs A real trade throughout as Meat comes to be in demand as Hill Sheep supplies dry. Mid weights a sharp move forwards and even heavies a little climb. Weighted Hoggs seeing 48kg to 279p/kg for Humphrey Livestock with the same 47kg at 274p/kg and F Hodgkin 46kg to 270p/kg. P J East up from Oxfordshire with 48.5kg to 268p/kg Meat all over 250p/kg unless over-weights.

In the Lump Export Hoggs topping at £131 for 45.5kg from W B Wrench with Texels whilst P J East saw 43kg to £130.50 and H L Goode & Son 44kg to £129.50. A Mitchell 45kg at £127 and A T Edwards 43.5kg to £126. Overall Heavies a little easier to sell but still held back by New Zealand supplies. A top of £140 for S Leedham at 75kg with WG Davies 60kg to £135.50 and D J Hull & Partners £135 at 61kg, equal with H L Goode & Son.

Auctioneer: Thomas Wrench

PRIME HOGGS SQQ 249p/kg

Per Kilo **under 45kg**

X Breed	28.50kg	404ppk	B W Wilson
X Breed	33.00kg	397ppk	B W Wilson
X Breed	36.00kg	375ppk	B W Wilson
X Breed	15.00kg	367ppk	B W Wilson
Beltex	35.00kg	329ppk	A T Edwards

Per HEAD

Texel	43.00kg	£130.50	P J East
Char	44.00kg	£129.50	H L Goode & son
Beltex	45.00kg	£127.00	A Mitchell
Beltex	43.50kg	£126.00	AT Edwards
Texel	44.00kg	£126.00	Humphrey Livestock

Per Kilo **over 45kg**

Beltex	48.00kg	279ppk	Huimphrey Livestock
Texel	47.00kg	274ppk	Humphrey Livestock
Char	46.00kg	270ppk	F Hodgkin
Texel	48.50kg	268ppk	P J East
Texel	46.00kg	266ppk	D W Gurney & Son

Per HEAD

Texel	75.00kg	£140.00	S Leedham
Char	60.00kg	£135.50	W G Davies
Char,	61.00kg	£135.00	D J Hull & Partners
Char	62.00kg	£135.00	H L Goode & Son
Beltex	48.00kg	£134.00	Humphrey Livestock

Sunday lairage is now open from 9am-3:00pm
Gates close 3:00pm **STRICTLY.**

FOR SALE

Collie Pups for Sale
Not registered
Fully Injected, ready to go
3 Dogs, 2 Bitches
Dave Tillson 07501121803

FOR SALE

Collie Pups for sale
Well Bred Working Parents
Father International Trial Winner
Ready Early March 07966505848

CULL EWES:1596 FORWARD



A large yarding of around 1600 Ewes today and as predicted just a week too late as numbers come out across the Country prior to the Fast. A large number of Fat Ewes forward today the most we have seen for some time, a commodity not so conjusive to one meal a day having to be taken during the night!. Ewes still a swift trade of £109.50 for a yarding of Farmers Ewes!!!! Best end short on Supply but still very much wanted seeing M Toon Sell Texels to £209 with BJ & IS Wain £205 and £203. V Phipps, Banbury £200, J & H Tustian a pen of 6 at £200 and S Leedham also £200. Texels regularly £180 plus if weighted. Suffolks a harder trade to £170 for I Lill with shaped Suffolks, others £142 for K Butcher and £140 for Hallifield Farmers and MM Clarke & Sons, generally either side of £120 with Fat a massive discount. Mules a harder trade as fat a hard commodity and the Mule always dying fatter than you think. £135 for Mules from C Bettles, £128 fro J & H Tustian and £121 for L Dallow. Mules generally eitherside of £100 albeit a harder sell on the week.

Auctioneer: Thomas Wrench

EWES

Texel	£209	M Toon	Texel	£200	V R Phipps
Texel	£205	BJ & IS Wain	Texel	£200	J & H Tustian
Mule	£203	L Dallow	Char	£200	S Leedham

STORE SHEEP: 210 FORWARD



A few better sorts forward in larger groups and on the back of the increased prices of Prime Hogs all the recipe for a good sale which prevailed

J Plumb topping at £93 for today, overall averaging £80

Auctioneer Tim Webster

CALVES: 77 FORWARD



Large spectrum of Calves forward today , all shapes and sizes and many different breeds

Trade was on fire and Calves returning to last year's amounts,
Many calves over £300 and topping at £385 for Whetstone Pastures lovely confirmation British Blue Bull which was bought by George Scrivens, who both receive Gift Vouchers of £25 to spend in StowAg

British Blue Bulls. £180 to £385
British Blue Hfrs. £120 to £280
Limousin Bulls. £195 to £345
Limousin Hfrs. £170 to £285
Simmental Bulls. to £180
Simmental Hfrs to £180
Angus Bulls. £60 to £240
Angus Hfrs £30 to £100
Friesian. to £8

Next sale will be 3rd April

Reared Calf

Paul Mardell sold 9mo Angus Heifers to £570

Auctioneer: Tim Webster

HARRIS & CLARKE **CHARTERED ACCOUNTANTS**

...Specialising In Agriculture...

**Our team of staff has many years of
experience in dealing with the accountancy
and taxation affairs of farmers, landowners
and agricultural contractors**

**For further information or a free no
obligation meeting please contact**

John Harris

7 Billing Road, Northampton, NN1 5AN
Telephone 01604 622274
www.harrisandclarke.co.uk





Farm insurance, the way it should be

We're a family-run business and pride ourselves on forging long term relationships with our farming and agricultural clients. Covering the Midlands, South West and South East, we deliver an extensive range of farm, agri business and equine policies tailored to you.

Farm & Equine **01865 290915**

General **01865 844998**

 Follow us **@County_Farm**

www.county-insurance.co.uk/farms



Independent Insurance Brokers County Insurance Services Limited. Address and Registered Office: County House, Glyme Court, Langford Lane, Kidlington, Oxon OX5 1LQ. Authorised and regulated by the Financial Conduct Authority (FCA) (FRN: 597267). Company registered in England No. 08411634

**We're
Hiring**

**Have you thought
of a career in
Accountancy
within the rural
environment?**



**We are looking for Trainees to join our specialist
Agriculture & Property team in Kettering and Banbury.
Ellacotts can offer you an exciting start to your career.**

- supporting the rural community
- working with a fantastic client base
- learn the practical aspects of accountancy whilst studying towards a recognised accounting qualification
- fully funded training

If this sounds like a great career choice for you then have a look at our website www.ellacotts.co.uk or contact our recruitment team on: 01536 646000 or careers@ellacotts.co.uk



Closing date for applications is Friday 31 March 2023

Apply now

Delivering Solutions | Enabling Success

WE COVER SMALL FARMS, LARGE FARMS AND EVERYTHING IN BETWEEN



From sheep farmers to arable farmers.
Flower growers to poultry farmers.

NFU Mutual is proud to insure over 75% of UK farms with our Farm Select insurance. But we want more farms to benefit from great cover and local service. NFU Mutual has introduced Farm Essentials insurance – designed to meet the needs of smaller farms.

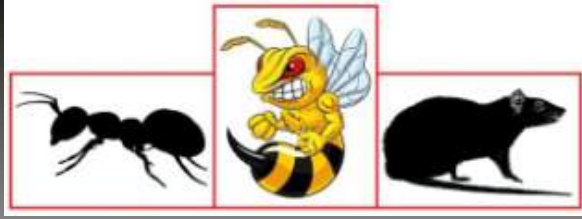
As your local agency, we are close by and can provide expert advice and hands-on support when you need it.

Call **Coventry Office** on **02476 444519**

NFU Mutual, 6 Eastwood Business Village,
Harry Weston Road, Binley Business Park,
Coventry, CV3 2UB



NFU Mutual
FARM INSURANCE



RDB Pest Control

Reliable | Trustworthy | Fast | Effective
Competitive Prices

Ryan Brunt

07922 091 459

www.rdbpestcontrol.co.uk

Why You Should Choose Us

- ✓ Cater for Red Tractor and Farm Assurance Schemes
- ✓ Wide ranging experience on Farms with over 25 existing routine agricultural clients
- ✓ Fully qualified - RSPH Level 2 in Pest Control
- ✓ Trustworthy and security vetted
- ✓ Prompt, reliable fast response

A selection of sites where I have experience:

Farmers Market • Local Airport • Farms • Warehouses •
Industrial Estates • Food Premises • Private Houses • Country
Estates • Building Sites • Local Councils • Schools •
Day Nurseries • Care Homes



THE MIDLANDS MART

RUGBYFARMERSMART.COM

FORTHCOMING SALES

**THURSDAY 30TH MARCH
SALE OF STORE CATTLE &
IN LAMB EWES**

**Vendors who are wishing to sell stock
please feel free to contact:**

Tom Wrench - 07774 723758 Market Manager & Auctioneer

Tim Webster- 07437 101163 Auctioneer & Fieldsman

Emma Coupland- 07808 271218 Fat Cattle Auctioneer

Charlie Betteridge- 07760266701 Fieldsman

Nathan Shaw-07460120293 Yard Manager

who will gladly make

A FREE ON FARM VISIT & VALUATION



Follow us on social media:

Facebook & Twitter - @RFMMidlandsMart

Instagram - rugbyfarmersmartLtd